

ERVIN DANESH AZMA



ERVIN DANESH AZMA

اروین دانش آزما

Ervin Danesh Azma

خدمات خوب یک اتفاق نیست ✓





BS-200
Chemistry Analyzer

اروین دانش آزما
Ervin Danesh Azma

✓ خدمات خوب یک اتفاق نیست



BS-200 Chemistry Analyzer

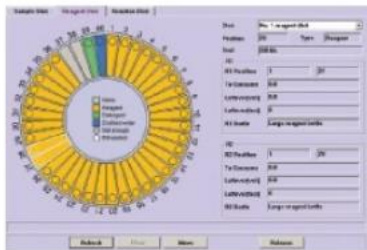
- Discrete, random access, fully automated
- 200 tests per hour, up to 330 tests per hour with ISE
- Optional for ISE module and internal bar code reader
- 40 positions for samples and reagents respectively
- Automatic probe cleaning, liquid level detection, collision protection
- Reversed optic system with 8 wavelengths: 340~670nm
- Refrigerated reagent and sample compartment
- Bi-directional LIS interface



اروین دانش آزما

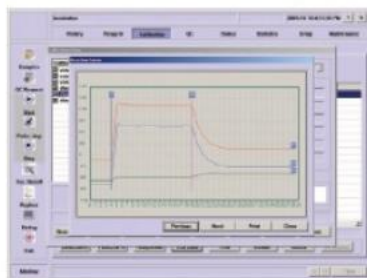
Ervin Danesh Azma

خدمات خوب یک اتفاق نیست ✓



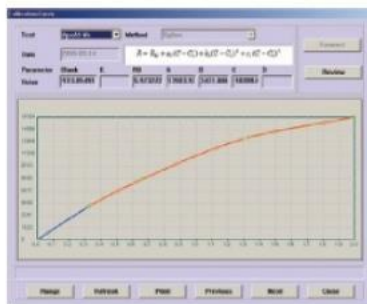
Dynamic and Real-time display of running status

- Running status of reagent tray, sample tray and reaction tray
- Real-time monitoring of reagent residual volume
- Probe depth adjusted automatically



Original reaction data record

- Real-time monitoring of reaction curve
- Bichromatic testing to avoid interference
- Simultaneously display primary and secondary wavelengths
- Detailed profile of alert messages
- Real-time diagnosis of system working status



Optimum calibration curve

Calibration classification:

- Linear curve type: One-point linear, Two-point linear and Multi-point linear.
- Nonlinear curve type: Logistic-Log 4P, Logistic-Log 5P, Exponential 5P, Polynomial 5P and Spline.

اروین دانش آزما

Ervin Danesh Azma

خدمات خوب یک اتفاق نیست ✓





High quality ISE Module (optional)

- Measuring K⁺, Na⁺, Cl⁻
- Throughput: up to 225 or 300 tests per hour
- 6 months shelf life



Multi-functional sample/reagent tray

- Optional internal reagent/sample bar code reader
- 40 positions for samples and reagents respectively
- Primary tubes and various sample cups can be used, non-fixed positions for samples, control, calibrators and STAT
- 24 hour non-stop cooling with Peltier elements



Disposable reaction cuvettes

- Disposable cuvettes to avoid carry-over and to save operating costs
- Automatic cuvettes blank checking to assure precise results



High performance mixer design

- Avoid cross contamination
- Optimal homogenization in minimum time
- Function immediately (within the same period)

اروین دانش آزما
Ervin Danesh Azma

✓ خدمات خوب یک اتفاق نیست



BS-200

Chemistry Analyzer

اروین دانش آزما
Ervin Danesh Azma

✓ خدمات خوب یک اتفاق نیست



Technical Specifications

System Function:

Automatic, Discrete, Random Access
STAT sample priority

Throughput: Up to 200 tests/hour (without ISE), up to
330 tests/hour with ISE

Measuring principles:

Absorbance photometry, Turbidimetry,
Ion Selective Electrode technology

Methodology: End-point, Fixed-time, Kinetic, optional
ISE

Single/Dual reagent chemistries,
monochromatic/bichromatic
Linear/non-linear multi-point calibration

Programming: Open system with user defined profiles
and calculation chemistries

Reagent/Sample Handling:

Reagent/Sample tray:

40 positions for reagents and 40
positions for samples in refrigerated
compartment (4~15°C)

Reagent volume:

R1: 180~450µl, step by 1 µl

R2: 30~450µl, step by 1 µl

Sample volume: 3~45µl, step by 0.5 µl

Reagent/Sample probe:

Liquid level detection, collision protection and
inventory checking

Probe cleaning: Automatic washing for both interior and exterior
Carry-over < 0.1%

Automatic sample dilution:

Pre-dilution and post-dilution
Dilution ratio up to 1: 150

Dilution vessel:

Disposable cuvette

Internal Bar Code Reader (optional):

Used for sample and reagent programming
Applicable to various bar code systems of
Codabar, ITF (Interleaved
Two of Five), code128, code39,
UPC/EAN, Code93
Capable to communicate with LIS in
bi-directional mode

ISE Module (optional):

Measuring K⁺, Na⁺, Cl⁻, Li⁺

Throughput: Up to 225 tests per hour

Reaction System:

Reaction rotor: Rotating tray, containing 80 cuvettes

Cuvette: Optical length 5mm

Reaction volume: 180~500µl

Reaction temperature: 37°C

Temperature fluctuation: ±0.1°C

Mixing System:

Independent mixing bar

Optical System:

Light Source: Halogen-tungsten lamp

Photometer: Reversed optics, static fiber spot photometry

Wavelength: 340nm, 405nm, 450nm, 510nm, 546nm,
578nm, 630nm, 670nm

Absorption range: 0~4.0Abs (10mm conversion)

Resolution: 0.0001Abs

Control and Calibration:

Calibration mode: Linear (one-point, two-point and multi-point),
Logit-Log 4P, Logit-Log 5P, Spline,
Exponential, Polynomial, Parabola

Control software: Westgard multi-rule, Cumulative sum
check, Twin plot

Operation Unit:

Operation system: Windows® XP Professional/Home SP2 or above
Windows® VISTA Home/Business

Interface: RS-232

Working Conditions:

Power Supply: AC 200~240V, 50/60Hz, 1000W or
AC 100~130V, 50/60Hz, 1000W

Temperature: 15~30°C

Humidity: 35~80%

Water consumption: 3.5L/hour

Dimension: Bench top: 34 inch (W) x28 inch (D)x25 inch (H)

Floor standing: 860mm (W) x700mm (D) x1160mm (H)

Weight: Bench top: 116 Kg

Cabinet (optional): 51 Kg

اروین دانش آزما

Ervin Danesh Azma



021_62999800

09100145015_18



CO.ERVINDANESHAZMA



WWW.ERVINDANESHAZMA.COM